



Karatachi has a pattern that looks like a tree called trifoliate orange. This pullover is worked from the bottom of the body up to the neck in the round. The sleeves and the hem are picked up from the body.

## YARN

Teoriya Moke Wool A [100g / 340m / 100% Wool]  
col.12 1360m / 400g

## NEEDLES

3.3mm/JP4 circular needle  
3.6mm/JP5 circular needle

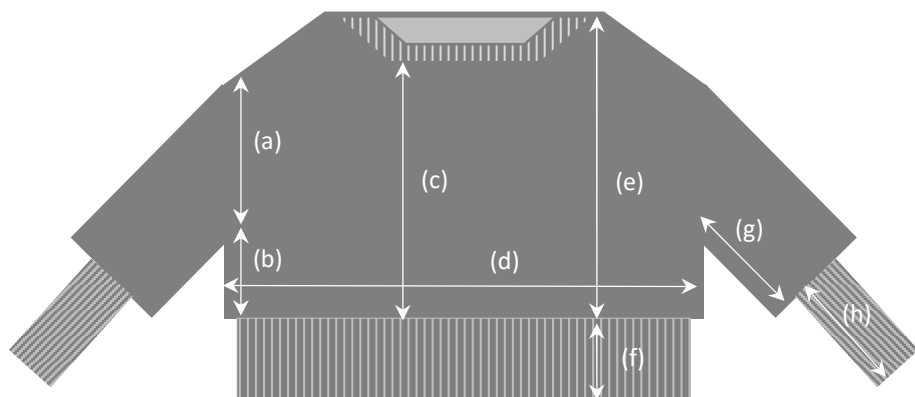
## GAUGE

20sts and 36rows = 10cm  
In Chart A (See Page 3) with 3.6mm/JP5 needle

## NOTIONS

Stitch markers  
Holders  
Cable Needle  
Crochet hook (for provisional croshet cast on)  
Scrap yarn (for provisional croshet cast on)

## MEASUREMENTS



a: 24cm      c: 40cm      e: 49cm      g: 28cm  
b: 18cm      d: 55cm      f: 13cm      h: 20cm

Finished body circumference approximately 110cm

## ABBREVIATIONS

R: Row / Round  
RS: Right Side  
WS: Wrong Side  
CO: Cast on  
BO: Bind off  
BOR: Beginning Of Round  
st(s): stitch(es)  
[ ]: repeat [ ]  
bef: before  
inc: increase  
dec: decrease  
M: Marker  
SM: Slip Marker

PM: Place Marker

RM: Remove Marker

K: Knit

P: Purl

K2to: Knit 2 stitches together

Sl: Slip stitch purlwise

tbl: through back loop

M1R: Make 1 stitch knit Right leaning stitch

Chart A (B / C / D): Work Chart A (B / C / D)

1/1 RT: Sl1 to cable needle hold in back, K1, K1 from cable needle

1/1 LT: Sl1 to cable needle hold in front, K1, K1 from cable needle

1/2 RT: Sl2 to cable needle hold in back, K1, K2 from cable needle

2/1 LT: Sl1 to cable needle hold in front, K2, K1 from cable needle

2/2 RT Purl: Sl2 to cable needle hold in back, K2, K2 from cable needle

2/2 LT Purl: Sl2 to cable needle hold in front, K2, K2 from cable needle

2/1 RT Purl: Sl1 to cable needle hold in back, K2, P1 from cable needle

1/2 LT Purl: Sl2 to cable needle hold in front, P1, K2 from cable needle

MDS: Make Double Stitch

KDS: Knit Double Stitch

PDS: Purl Double Stitch

# CHART

Chart A

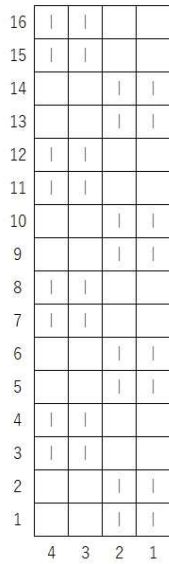


Chart B

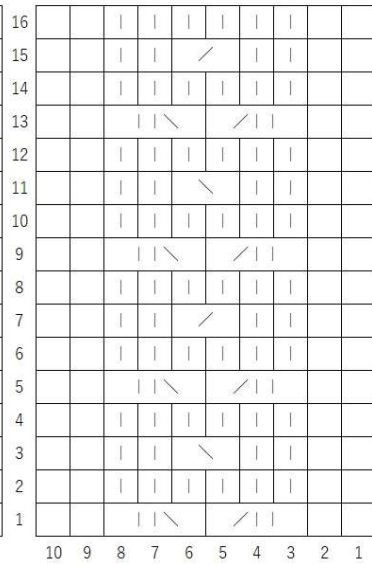
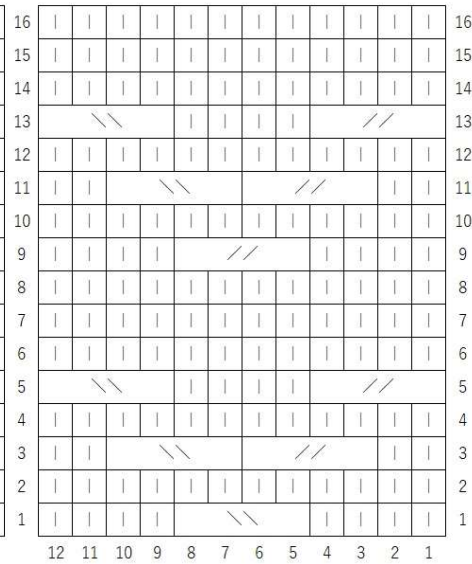


Chart C














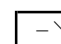


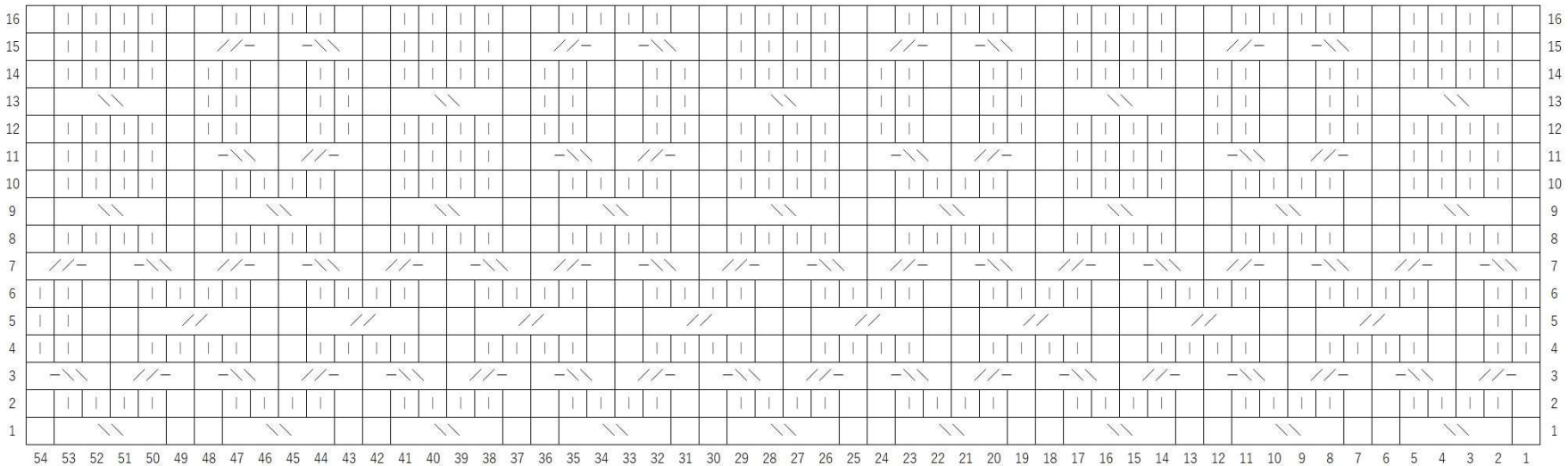
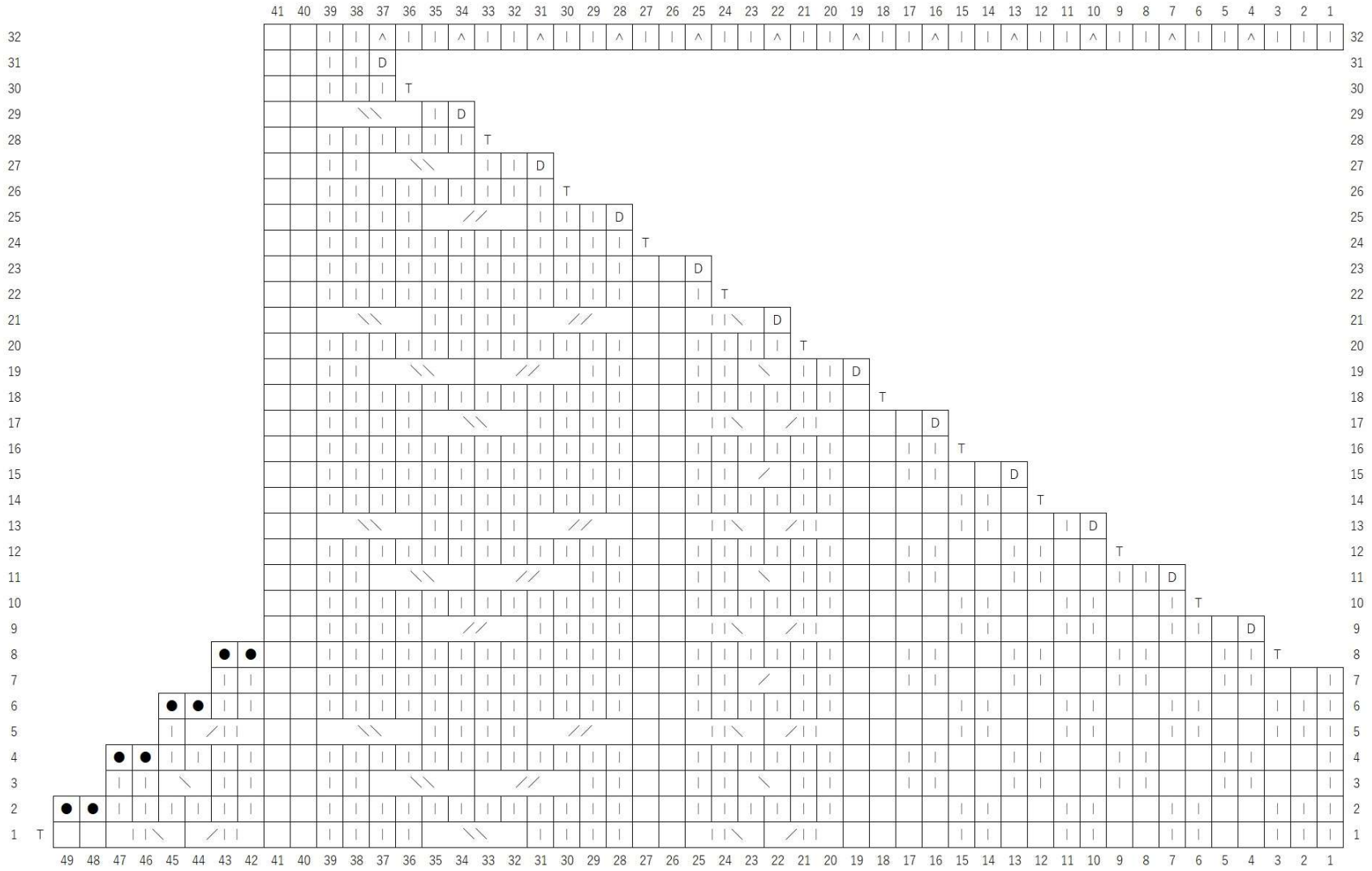
-  (RS) K / (WS) P
-  1/1 RT
-  1/2 RT
-  2/2 RT
-  2/1 RT Purl
-  Turn
-  BO
-  (RS) P / (WS) K
-  1/1 LT
-  2/1 LT
-  2/2 LT
-  1/2 LT Purl
-  MDS
-  (RS) KDS / (WS) PDS

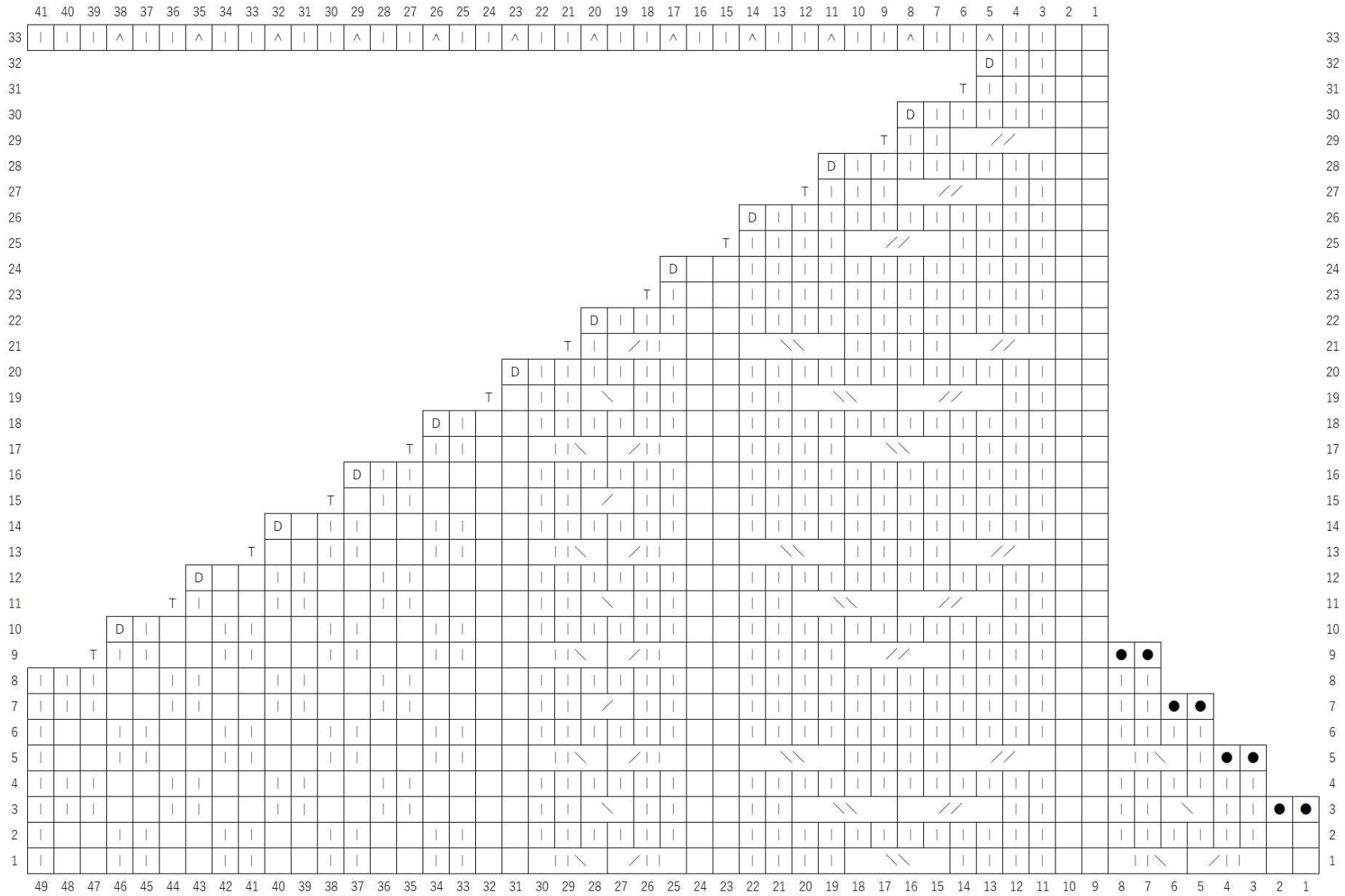
Chart D



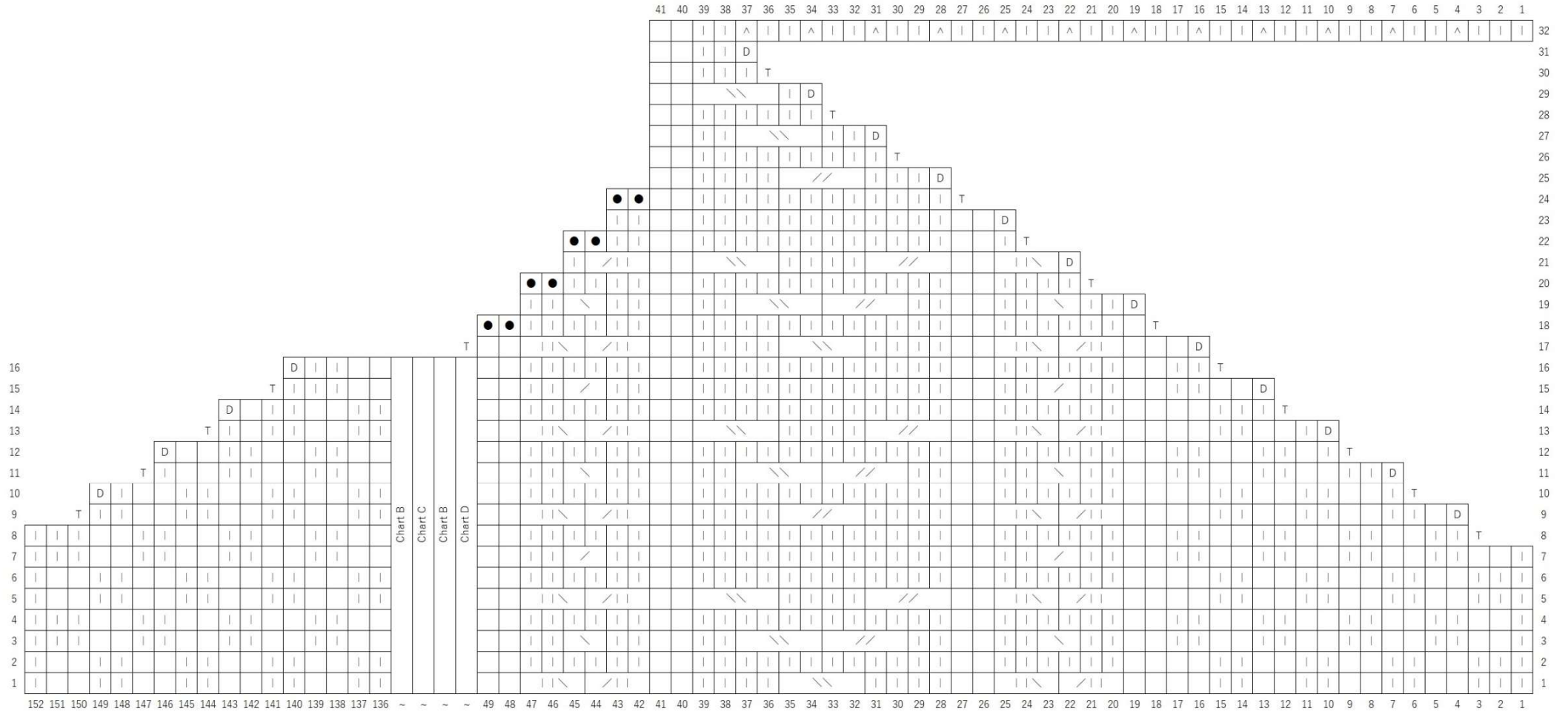
# Chart LF



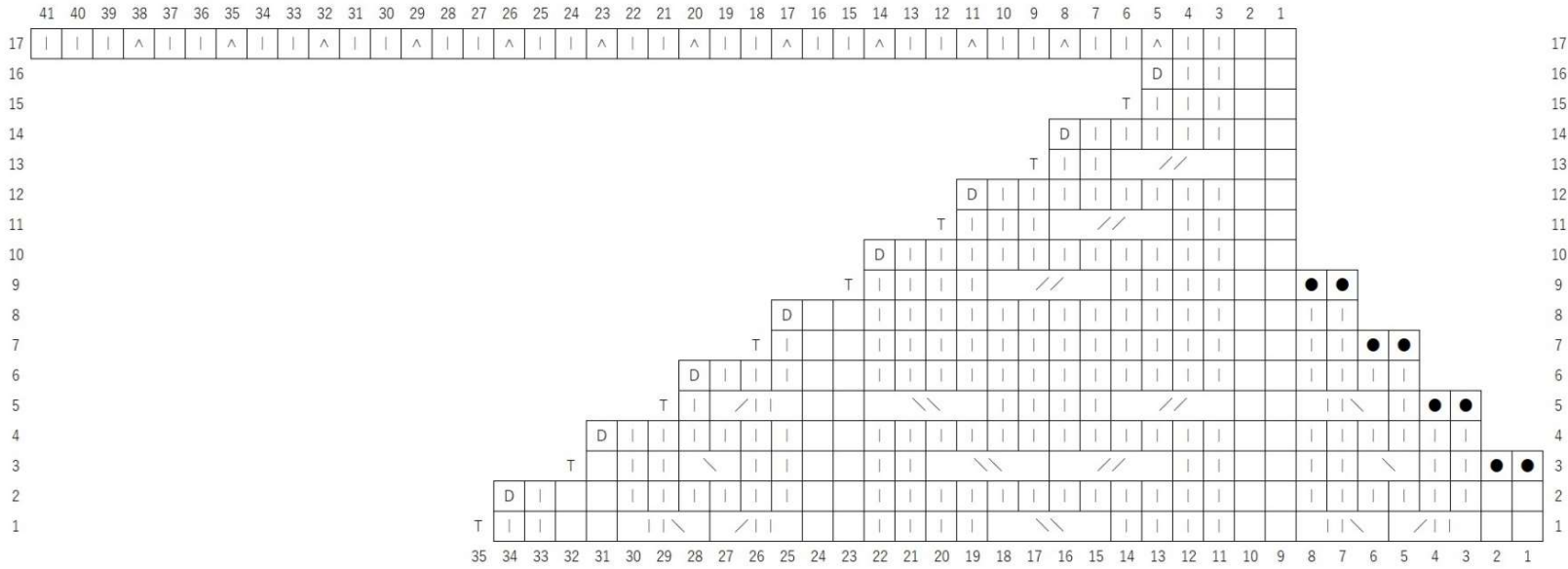
# Chart RF



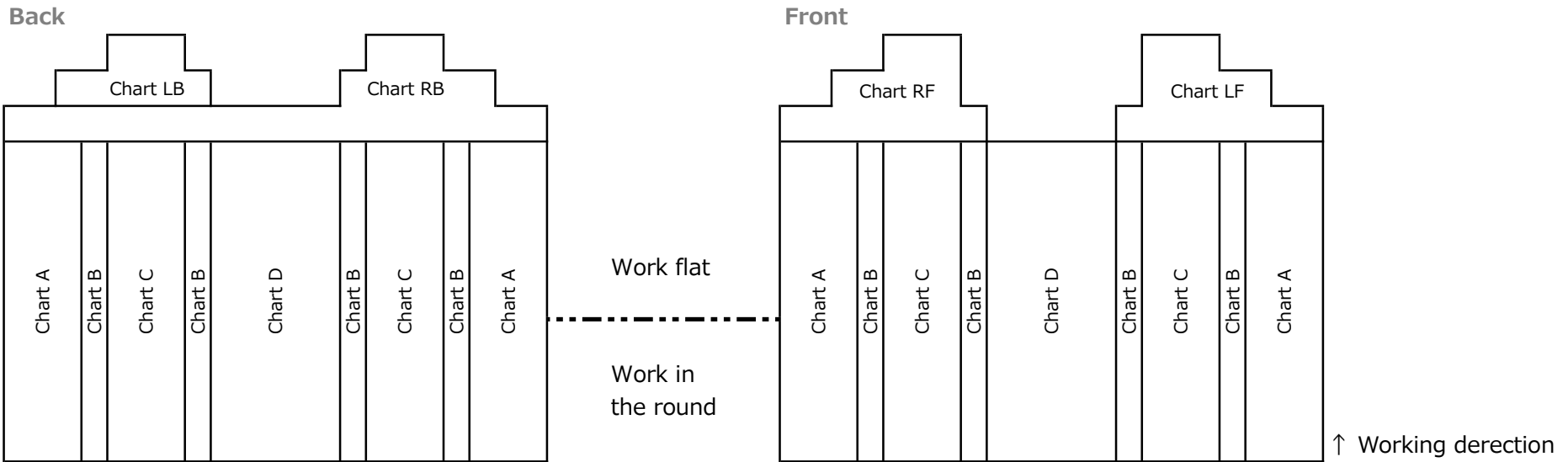
# Chart RB



# Chart LB



## INSTRUCTION FOR BODY



---

## Sec.1: Body

Use **3.6mm/JP5** circular needle and **Work Body in the round**

Set Up1: **CO302** using scrap yarn and **Crocheted Provisional Cast On method**,  
PM for BOR, Join to work in the round

Set Up2: SM, [P1, K16, P2, K6, P2, K12, P2, K6, P2, K54, P2, K6, P2, K12, P2, K6, P2, K16] 2 times

**Start Chart (See page 3)**

R1-64: SM, [P1, [Chart A] 4 times, Chart B, Chart C, Chart B, Chart D, Chart B, Chart C, Chart B, [Chart A] 4 times] 2 times  
>Start with R1 of Chart, End with R16 of Chart, 4 sets of Chart in total

## Sec.2: Front Body

**Work Front Body flat**

R1(RS): RM, K1, [Chart A] 4 times, Chart B, Chart C, Chart B, Chart D, Chart B, Chart C, Chart B, [Chart A] 4 times, M1R,  
Place the next 151sts for Back Body on a holder, Turn

>Start with Row1 of Chart, 1st inc, 152sts for Front Body in total

R2(WS): P1, [Chart A] 4 times, Chart B, Chart C, Chart B, Chart D, Chart B, Chart C, Chart B, [Chart A] 4 times, P1, Turn

R3(RS): K1, [Chart A] 4 times, Chart B, Chart C, Chart B, Chart D, Chart B, Chart C, Chart B, [Chart A] 4 times, K1, Turn

R4-79: [R2-3] 38 times

R80(WS): R2

>End with R16 of Chart, 5 sets of Chart inc, 9 sets of Chart in total

## Sec.3: Front Shoulder

**Work Left Front Shoulder flat in Chart LF (See page 4) using German Short Row**

R1(RS): Work Chart LF, Place the next 103sts for Right Front on a holder, Turn

>Start with R1 of Chart, 49sts for Left Front in total

---

R2-32: Work Chart LF  
>End with R32 of Chart, 41sts for Left Front in total

**Break Yarn and Place 41sts for Left Front on a holder**

**Work Right Front Shoulder flat in Chart RF (See page 5) using German Short Row**

R1(RS): Place 103sts for Right Front on a needle, Join yarn, BO54 knitwise, Work Chart RF, Turn  
>Start with R1 of Chart, 49sts for Right Front in total

R2-33: Work Chart RF  
>End with R33 of Chart, 41sts for Right Front in total

**Break Yarn and Place 41sts for Right Front on a holder**

#### Sec.4: Back Body

**Work Back Body flat**

R1(RS): Place 151sts for Back Body on a needle, Join yarn,  
K1, [Chart A] 4 times, Chart B, Chart C, Chart B, Chart D, Chart B, Chart C, Chart B, [Chart A] 4 times, M1R, Turn  
>Start with Row1 of Chart, 1st inc, 152sts for Back Body in total

R2(WS): P1, [Chart A] 4 times, Chart B, Chart C, Chart B, Chart D, Chart B, Chart C, Chart B, [Chart A] 4 times, P1, Turn

R3(RS): K1, [Chart A] 4 times, Chart B, Chart C, Chart B, Chart D, Chart B, Chart C, Chart B, [Chart A] 4 times, K1, Turn

R4-79: [R2-3] 38 times

R80(WS): R2

>End with R16 of Chart, 5 sets of Chart inc, 9 sets of Chart in total

---

## Sec.5: Back Shoulder

### **Work Right Back Shoulder flat in Chart RB (See page 6) using German Short Row**

R1-16: Work Chart RB

>Start with R1 of Chart, End with R16 of Chart

R17(RS): Work R17 of Chart RB, Place the next 103sts for Left Back on a holder, Turn

>49sts for Right Back in total

R18-32: Work Chart RB

>Start with R18 of Chart, End with R32 of Chart, 41sts for Right Back in total

### **Don't Break Yarn and Join Right Shoulder using Three Needle Bind Off**

### **Work Left Back Shoulder flat in Chart LB (See page 7) using German Short Row**

R1(RS): Place 103sts for Left Back on a needle, Join yarn, BO54 knitwise, Work Chart LB, Turn

>Start with R1 of Chart, 49sts for Left Back in total

R2-17: Work Chart LB

>End with R17 of Chart, 41sts for Left Back in total

### **Don't Break Yarn and Join Left Shoulder using Three Needle Bind Off**

## Sec.6: Neck

### **Use 3.3mm/JP4 circular needle and Work Neck in the round**

R1: Starting at Right Shoulder, Pick up and knit 8sts from the right side of the back neck, Pick up and knit 45sts from the center of the back neck, Pick up and knit 9sts from the left side of the back neck, Pick up and knit 11sts from the left side of the front neck, Pick up and knit 45sts from the center of the front neck, Pick up and knit 12sts from the right side of the front neck, PM for BOR, Join to work in the round

>130sts in total

R2-9: [K1 tbl, P1] to M

---

R10: BO all stitches knitwise

## Sec.7: Hem

Use **3.3mm/JP4** circular needle and Work Hem in the round

Remove Crocheted Provisional Cast On stitches of Sec.1 and Place it on the needle, PM for BOR, Join to work in the round  
>302sts in total

R1: Join yarn, SM, [K2, K2to] 17 times, [K1, K2to] 5 times, [K2, K2to] 34 times, [K1 K2to] 5 times, [K2, K2to] 17 times  
>78sts dec, 224sts in total

R2: SM, [K2, P2] to M

Work in 2x2 rib stitch (Continue R2) until Hem measures 13cm and BO all stitches knitwise

## Sec.8: Sleeves

Use **3.6mm/JP5** circular needle and Work Sleeve in the round

Set Up: Join Yarn, Pick up and knit 89sts starting at the bottom of the armhole, PM for BOR, Join to work in the round  
>approximately pick up 1sts per 2rows, 89sts in total

R1-96: SM, P1, [Chart A] 7 times, Chart B, Chart C, Chart B, [Chart A] 7 times  
>Start with R1 of Chart, End with R16 of Chart, 6 sets of Chart in total

## Sec.9: Cuffs

Change to **3.3mm/JP4** circular needle

R1: SM, K2, K2to, [K1, K2to] to 4sts bef M, K2, K2to  
>29sts dec, 60sts in total

R2-74: SM, [K2, P2] to M

R75: BO all stitches knitwise