



Koyo has a pattern that looks like trunks and branches with autumn leaves.  
It is worked top-down seamlessly.  
At first it is worked flat, joined under the armhole and worked in the round.

## YARN

Life in the Long Grass Singles [100g / 366m / 100% Merino Wool]  
col.Rhassoul 1463m / 400g

## NEEDLES

3.6mm/JP5 circular needle  
3.0mm/JP3 circular needle

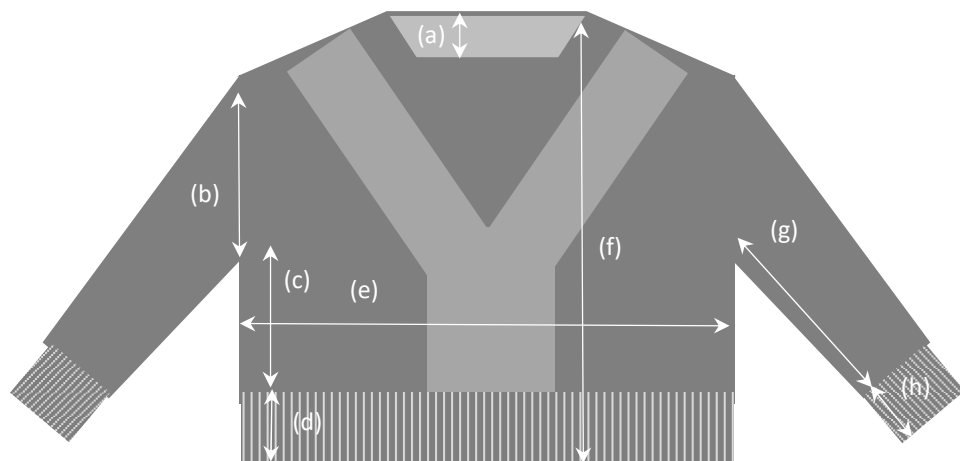
## GAUGE

27sts and 38rows = 10cm  
In Moss Stitch (See Chart) with 3.6mm/JP5 needle

## NOTIONS

Stitch markers  
Holders  
Cable Needle

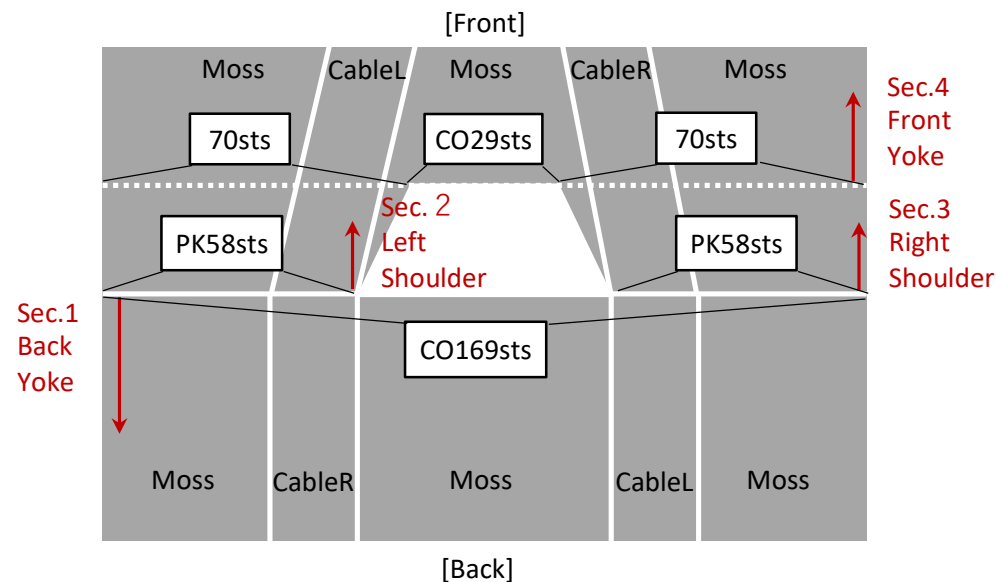
## MEASUREMENTS



a: 5cm      c: 31cm      e: 50cm      g: 40cm  
 b: 17cm      d: 7cm      f: 57cm      h: 5cm

Finished body circumference approximately 100cm

## INSTRUCTION FOR YOKE



## ABBREVIATIONS

R: Row / Round  
 RS: Right Side  
 WS: Wrong Side  
 CO: Cast on  
 BO: Bind off  
 BOR: Beginning Of Round  
 st(s): stitch(es)  
 [ ]: repeat [ ]  
 bef: before  
 M: Marker  
 MM: Main Marker  
 S(M)M: Slip (Main) Marker

P(M)M: Place (Main) Marker  
 R(M)M: Remove (Main) Marker  
 K: Knit  
 P: Purl  
 Sl: Slip  
 K2to: Knit 2 stitches together  
 SSK: Slip, Slip, Knit 2 sts together through back loop  
 P2to: Purl 2 stitches together  
 SSP: Slip, Slip, Purl 2 sts together through back loop  
 M1R: Make 1 stitch knit Right leaning stitch  
 M1PR: Make 1 stitch Purl Right leaning stitch  
 M1L: Make 1 stitch knit Left leaning stitch

M1PL: Make 1 stitch Purl Left leaning stitch  
 S2KP: Sl2 together, K1, Pass slipped stitches over  
 tbl: through back loop  
 MDS: Make Double Stitch  
 KDS: Knit Double Stitch  
 PDS: Purl Double Stitch  
 Moss: Work Moss Stitch Chart (See Chart page 8)  
 Cable R: Work Cable R Chart (See Chart page 8)  
 Cable L: Work Cable L Chart (See Chart page 8)  
 Cable C: Work Cable C Chart (See Chart page 10)  
 inc: increase  
 dec: decrease

---

## Sec.1: Back Yoke

Use **3.6mm/JP5** circular needle and Work **Back Yoke flat**

Setup1(RS): **CO169** using Long Tail cast on method

Setup2(WS): P19, PM, P38, PM, P55, PM, P38, PM, P19

Start **German Short Row (See Chart page 9)**

R1-24: Work Back Yoke Chart

Start **Cable L / R (See Chart page 8)**

R25(RS): K2, P1, Moss to M, SM, Cable R, SM, Moss to M, SM, Cable L, SM, Moss to 3sts before End, P1, K2

> Start with R1 of Cable Chart

R26(WS): P2, K1, Moss to M, SM, Cable L, SM, Moss to M, SM, Cable R, SM, Moss to 3sts before End, K1, P2

R27-72: [R25-26] 23 times

> End with R12 of Cable L / R Chart

**Break yarn** and Place **169sts** for Back Yoke on a holder

## Sec.2: Left Shoulder

Use **3.6mm/JP5** circular needle and Work **Left Shoulder flat**

Setup1(RS): Join yarn at 58th st from the left of Back Yoke CO edge, Pick up and knit 58sts

Setup2(WS): P19, PM, P38, PM, P1

Start **German Short Row (See Chart page 9)**

R1-20: Work Left Shoulder Chart

> 12sts inc, 70sts in total

---

**Break yarn and Place 70sts for Left Shoulder on a holder**

### Sec.3: Right Shoulder

**Use 3.6mm/JP5 circular needle and Work Right Shoulder flat**

Setup1(RS): Join yarn at the right of Back Yoke CO edge, Pick up and knit 58sts

Setup2(WS): P1, PM, P38, PM, P19

**Start German Short Row (See Chart page 9)**

R1-20: Work Right Shoulder Chart

> 12sts inc, 70sts in total

**Don't break yarn and Continue to Sec.4**

### Sec.4: Front Yoke

**Join Left Shoulder and Right Shoulder and Work Front Yoke flat**

R1(RS): Work Front Yoke Chart (1-70th sts), CO29, Place 70sts for Left Shoulder on a needle, Work Front Yoke Chart (100-169th sts)  
> 169 in total

R2-4: Work Front Yoke Chart

**Start Cable L / R (See Chart page 8) and Increases and Decreases every 3 rows**

R25(RS): K2, P1, Moss to M, M1R, SM, Cable R, SM, K2to, Moss to M, SSK, SM, Cable L, SM, M1L, Moss to 3sts before End, P1, K2  
> Start with R1 of Cable L / R Chart

> 49 sts between 2 Center Markers, 22sts between each End and Marker

R26(WS): P2, K1, Moss to M, SM, Cable L, SM, Moss to M, SM, Cable R, SM, Moss to 3sts before End, K1, P2

R27(RS): K2, P1, Moss to M, SM, Cable R, SM, Moss to M, SM, Cable L, SM, Moss to 3sts before End, P1, K2

---

R28(WS): P2, K1, Moss to M, M1PL, SM, Cable L, SM, SSP, Moss to M, P2to, SM, Cable R, SM, M1PR, Moss to 3sts before End, K1, P2  
> 47 sts between 2 Center Markers, 23sts between each End and Marker

R29(RS): K2, P1, Moss to M, SM, Cable R, SM, Moss to M, SM, Cable L, SM, Moss to 3sts before End, P1, K2

R30(WS): P2, K1, Moss to M, SM, Cable L, SM, Moss to M, SM, Cable R, SM, Moss to 3sts before End, K1, P2

R31-72: [R25-30] 7 times  
> End with R12 of Cable L / R Chart  
> 19 sts between 2 Center Markers, 37sts between each End and Marker

**Don't break yarn and Continue to Sec.5**

## Sec.5: Body

**Join Front Yoke and Back Yoke and Work Body in the round**

**Continue Cable L / R and Increases and Decreases every 3 rows in the front**

R1: K2, P1, Moss to M, M1R, SM, Cable R, SM, K2to, Moss to M, SSK, SM, Cable L, SM, M1L, Moss to 3sts before End, P1, K1, PM,  
K2to (the last stitch of Front Yoke and the first stitch of Back Yoke),  
K1, P1, Moss to M, SM, Cable R, SM, Moss to M, SM, Cable L, SM, Moss to 3sts before End, P1, K1,  
K2to (the last stitch of Back Yoke and the first stitch of Front Yoke), PMM  
> Start with R13 of Cable L / R Chart  
> 167sts for the front, 169sts for the back, 336sts in total  
> 17sts between 2 Center Markers, 37sts between each Side and Marker in the front

R2-3: SMM, Moss to M, SM, Cable R, SM, Moss to M, SM, Cable L, SM, Moss to M, SM,  
P1, Moss to M, SM, Cable R, SM, Moss to M, SM, Cable L, SM, Moss to 1st before MM, P1

R4: SMM, Moss to M, M1R, SM, Cable R, SM, K2to, Moss to M, SSK, SM, Cable L, SM, M1L, Moss to M, SM,  
P1, Moss to M, SM, Cable R, SM, Moss to M, SM, Cable L, SM, Moss to 1st before MM, P1  
> 15sts between 2 Center Markers, 38sts between each Side and Marker in the front

R5-22: [R2-4] 6 times

R23-24: R2-3  
> End with R36 of Cable L / R Chart  
> 3sts between 2 Center Markers, 44sts between each Side and Marker in the front

---

**Start Cable C (See Chart page 10) and End Increases and Decreases in the front**  
**Continue Cable L / R in the back**

- R1: SMM, Moss to M, M1R, SM, Cable C (Removing Markers), SM, M1L, Moss to M, SM,  
P1, Moss to M, SM, Cable R, SM, Moss to M, SM, Cable L, SM, Moss to 1st before MM, P1  
> Start with R1 of Cable C Chart, 45sts between each Side and Marker in the front  
> Start with R1 of Cable L / R Chart in the back
- R2-84: SMM, Moss to M, SM, Cable C, SM, Moss to M, SM,  
P1, Moss to M, SM, Cable R, SM, Moss to M, SM, Cable L, SM, Moss to 1st before MM, P1  
> End with R84 of Cable C Chart in the front, 3sts dec, 164sts for the front  
> End with R12 of Cable L / R Chart in the back

## Sec.6: Hem

### **Change to 3.0mm/JP3 circular needle**

- R1: SMM, K2to, K1, P2, [K2, P2] to 4sts bef M, K2, P2to, RM, \*P1, K2, M1PR, P1, K2to, K1, P1, M1PR, K2to,  
[SSK, M1PR, P1, K2to, K1, P1, M1PR, K2to] to 10sts bef M, SSK, M1PR, P1, K2to, K1, P1, M1PR, K2, P1,\*  
RM, P2to, [K2, P2] to 3sts bef M, K1, K2to, RM, P1, P2to, [K2, P2] to 4sts bef M, K2, P2to, RM,  
\*-\* , RM, P2to, [K2, P2] 6 times, K1, K2to, [P2, K2] to 2sts bef M, P2to, RM,  
\*-\* , RM, P2to, [K2, P2] to 5sts bef MM, K2, P2to, P1  
> 21sts dec, 312sts in total
- R2-27: SMM, [K2, P2] to MM
- R28: BO in R27 pattern

## Sec.7: Sleeves

### **Use 3.6mm/JP5 circular needle and Work Sleeve in the round**

- Setup: Join Yarn, Pick up and knit 93sts starting at the bottom of the armhole, PM  
> approximately pick up 3sts per 4rows, 93sts in total
- R1-20: SM, P1, Moss to M

---

R21: SM, P1, K2to, Moss to 2sts bef M, SSK  
> 2sts dec, 91sts in total  
R22-36: SM, P1, Moss to M  
R37-84: [R21-36] 3 times  
> every 16 rows decrease  
> 6sts dec, 85sts in total  
R85: SM, P1, K2to, Moss to 2sts bef M, SSK  
>2sts dec, 83sts in total  
R86-96: SM, P1, Moss to M  
R97-120: [R85-96] 2 times  
> every 12 rows decrease  
> 4sts dec, 79sts in total

## Sec.8: Cuffs

### **Change to 3.0mm/JP3 circular needle**

R1: SM, K2to, K6, [K2to, K5] 10 times, K1  
> 11sts dec, 68 in total  
R2-19: SM, [K2, P2] to M  
R20: BO in R19 pattern

## Sec.9: Neck

### **Use 3.0mm/JP3 circular needle**

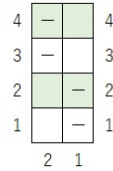
Setup: Join yarn at the center of the back, Pick up and knit 27sts from the back,  
Pick up and knit 22sts from the left of the front, Pick up and knit 29sts from the center of the front,  
Pick up and knit 22sts from the right of the front, Pick up and knit 26sts from the back, PM  
> 126sts in total  
R1: SM, P to M  
R2: i-cord BO (CO 3 sts using cable CO, [K2, k2tog tbl, slip 3 sts back to left needle] to M)

# Chart

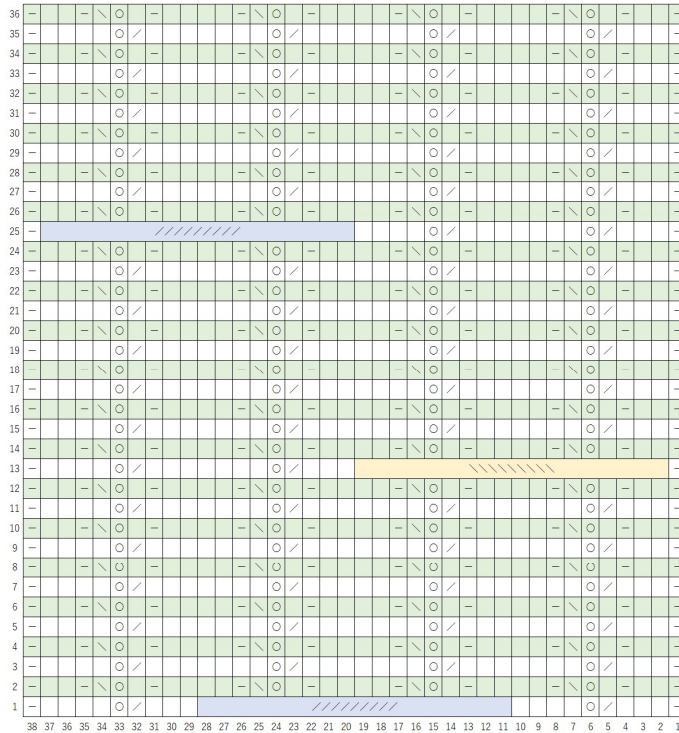
## Legend

- |                       |                            |
|-----------------------|----------------------------|
| (RS) K<br>; 表目        | (WS) P<br>; 裏目             |
| (RS) P<br>; 裏目        | (WS) K<br>; 表目             |
| (RS) YO<br>; かけ目      | (WS) YO<br>; かけ目           |
| (RS) K2to<br>; 左上2目一度 | (WS) P2to<br>; 裏目の左上2目一度   |
| (RS) SSK<br>; 右上2目一度  | (WS) SSP<br>; 裏目の右上2目一度    |
| (RS) MDS<br>; DSを作る   | (WS) MDS<br>; DSを作る        |
| (RS) KDS<br>; DSを表編み  | (WS) PDS<br>; DSを裏編み       |
| T Turn<br>; 裏返す       | CO<br>; 作り目                |
| (RS) M1R<br>; 右ねじり増目  | Pick up and Knit<br>; 目を拾う |
| (RS) M1L<br>; 左ねじり増目  | S2KP<br>; 中上3目一度           |

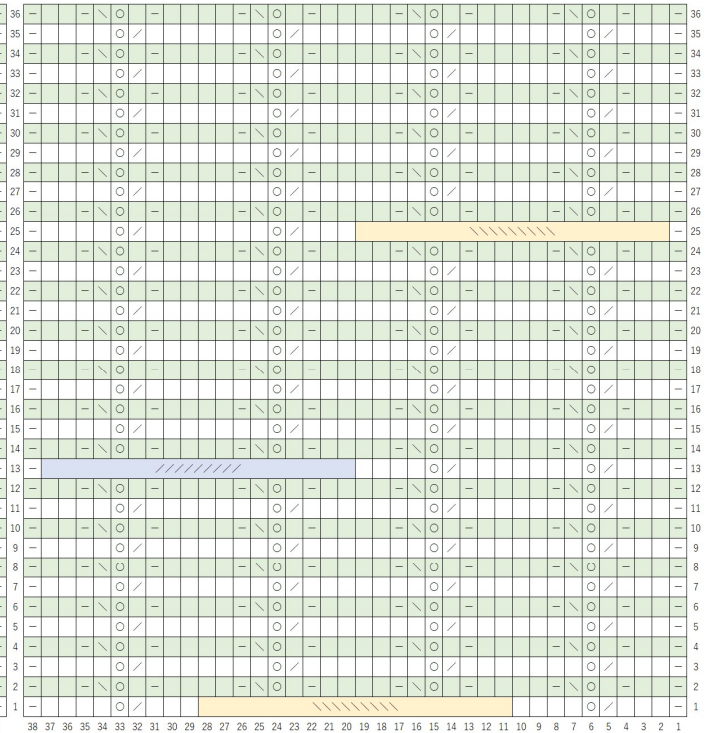
## Moss Stitch



## Cable L



## Cable R



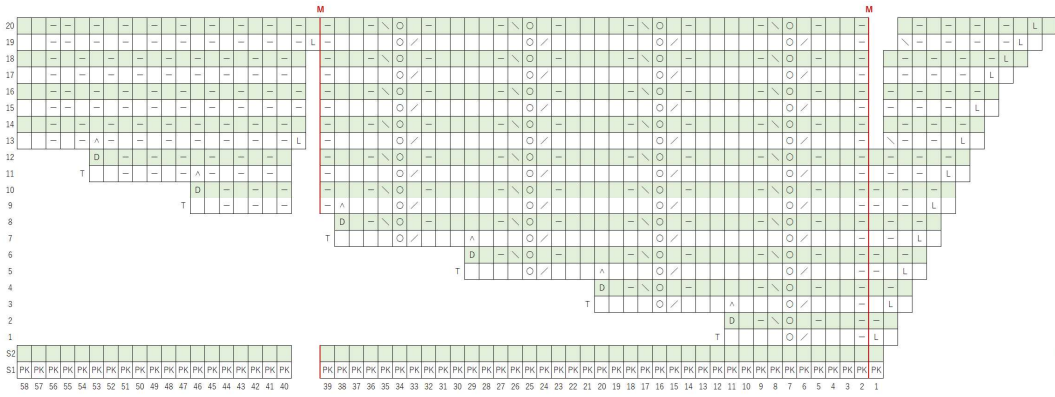
9/9 RT: S19 to cable needle hold in back, K3, K2to, YO, K4,  
K3, K2to, YO, K4 from cable needle  
; 左上9目交差

9/9 LT: S19 to cable needle hold in front, K3, K2to, YO, K4,  
K3, K2to, YO, K4 from cable needle  
; 右上9目交差

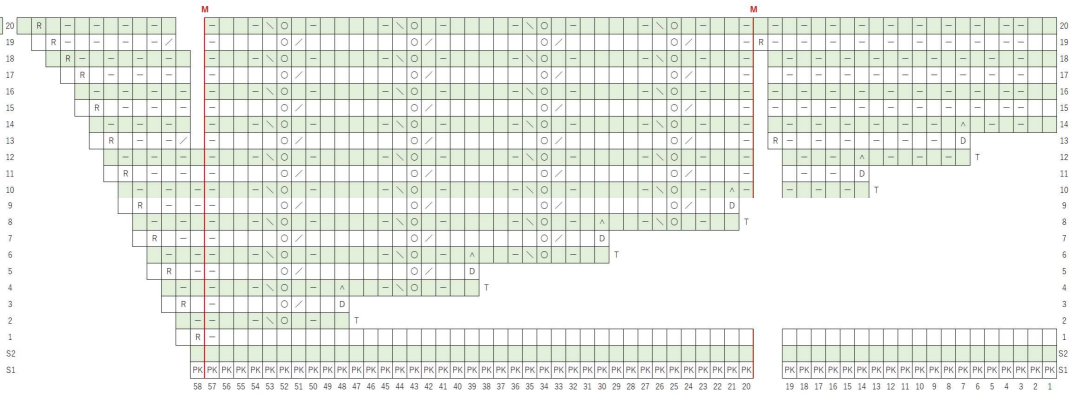
# Back Yoke



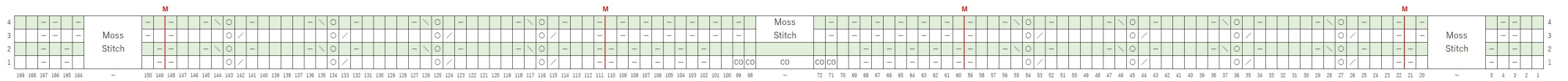
# Left Shoulder



# Right Shoulder



# Front Yoke



# Cable C

