



Kumiko, '組子' is Japanese traditional technique of assembling wooden pieces without using nails. This pullover has a pattern that looks like Kumiko design motif called Mikado, '帝つなぎ'.

YARN

Main Color;

MADELINTOSH Tosh Merino Light [100g / 384m / 100% Merino wool]
col.Citrus approximately 1421m / 370g

Contrast Color;

SnailYarn Merino Singles Fingering [100g / 355m / 100% Merino wool]
col.Koi approximately 110m / 30g

NEEDLES

3.3mm/JP4 circular needle

3.0mm/JP3 circular needle

GAUGE

27sts and 48rows = 10cm

In Chart E (See Page 4) with 3.3mm/JP4 needle

NOTIONS

Stitch markers

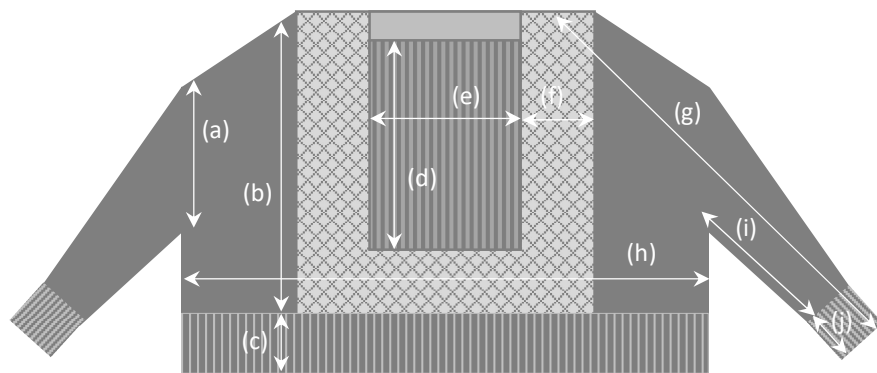
Helpers

Cable Needle

Crochet hook (for provisional croshet cast on)

Scrap yarn (for provisional croshet cast on)

MEASUREMENTS



a: 17cm c: 9cm e: 17cm g: 65cm i: 30cm
b: 45cm d: 29cm f: 10.5cm h: 60cm j: 8.5cm

Finished body circumference approximately 120cm

ABBREVIATIONS

R: Row or Round
RS: Right Side
WS: Wrong Side
MC: Main Color yarn
CC: Contrast Color yarn
CO: Cast on
BO: Bind off
BOR: Beginning Of Round
st(s): stitch(es)
[]: repeat []
bef: before
inc: increase
dec: decrease

MM: Main Marker

M: Marker

S(M)M: Slip (Main) Marker

P(M)M: Place (Main) Marker

R(M)M: Remove (Main) Marker

K: Knit

P: Purl

SSK: Slip, Slip, Knit 2 stitches together through back loop

K2to: Knit 2 stitches together

SSP: Slip, Slip, Purl 2 stitches together through back loop

P2to: Purl 2 stitches together

Sl: Slip stitch purlwise

tbl: through back loop

wyib: with yarn held in back

wyif: with yarn held in front

M1R: Make 1 stitch knit Right leaning stitch

M1L: Make 1 stitch knit Left leaning stitch

RN: Right Needle

LN: Left Needle

Chart A (B / C / D): Work Chart A (B / C / D)

1/1 RT: Sl1 to cable needle hold in back, K1, K1 from cable needle

1/1 LT: Sl1 to cable needle hold in front, K1, K1 from cable needle

1/1 RT Purl: Sl1 to cable needle hold in back, K1, P1 from cable needle

1/1 LT Purl: Sl1 to cable needle hold in front, P1, K1 from cable needle

CHART FOR BODY

Chart C

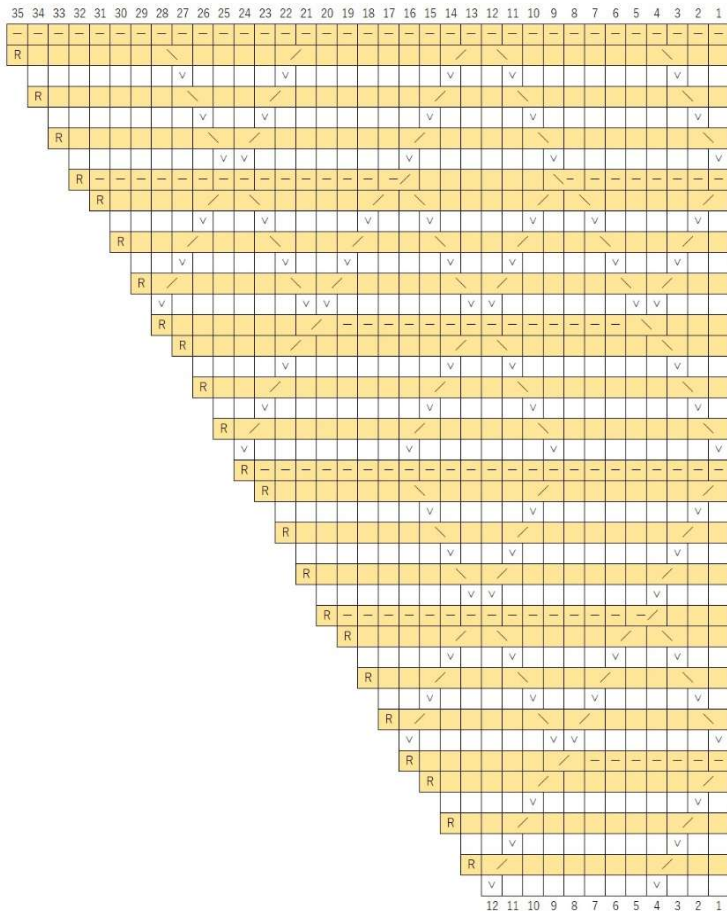


Chart B

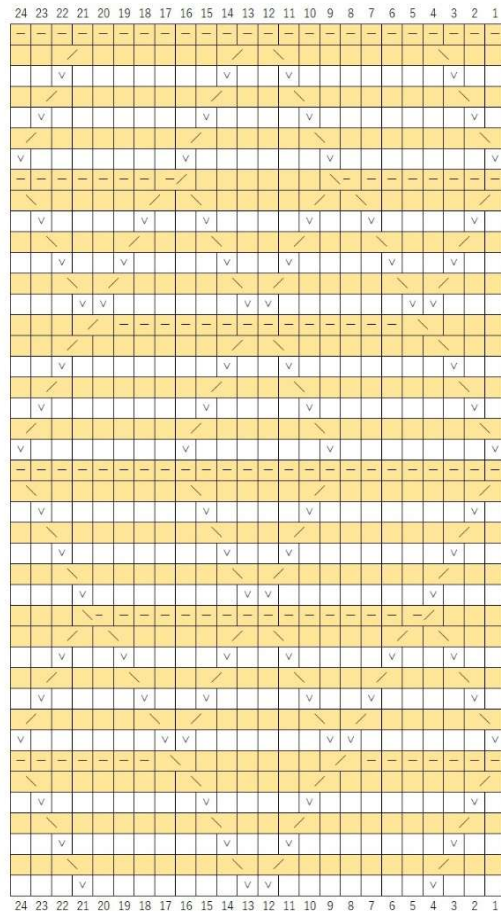
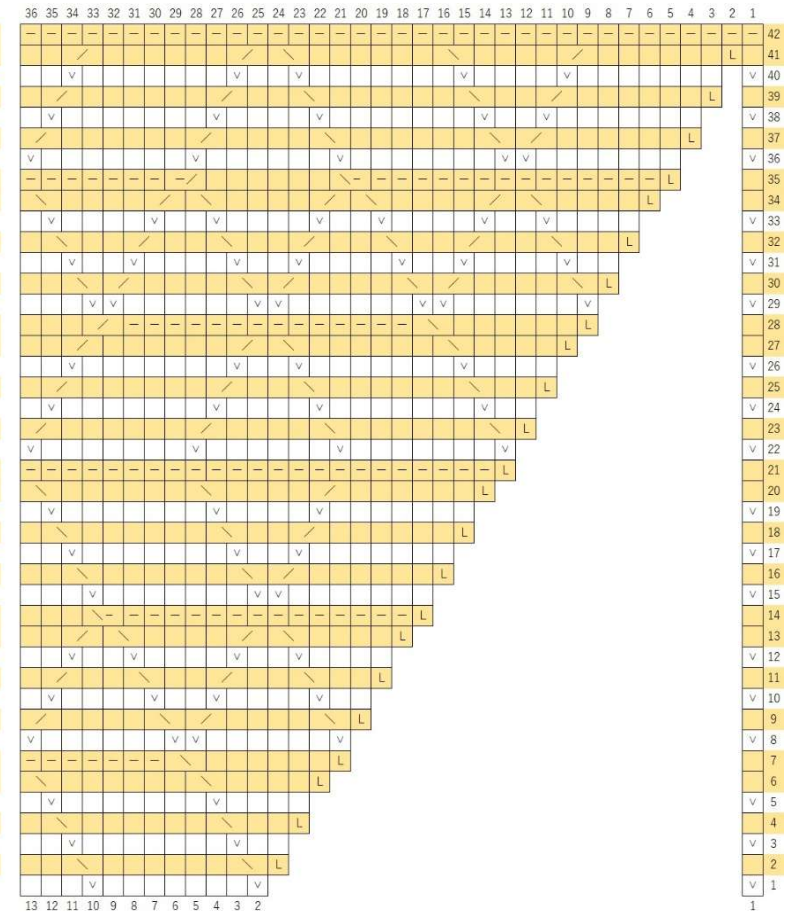


Chart A










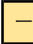


-  K1 with MC
-  M1R with MC
-  1/1 LT
-  1/1 LT Purl
-  P1 with MC
-  M1L with MC
-  1/1 RT
-  1/1 RT Purl
-  K1 with CC
-  S11 wyib with CC

CHART FOR RIGHT/LEFT BODY AND SLEEVE

INSTRUCTION FOR BODY

Chart D

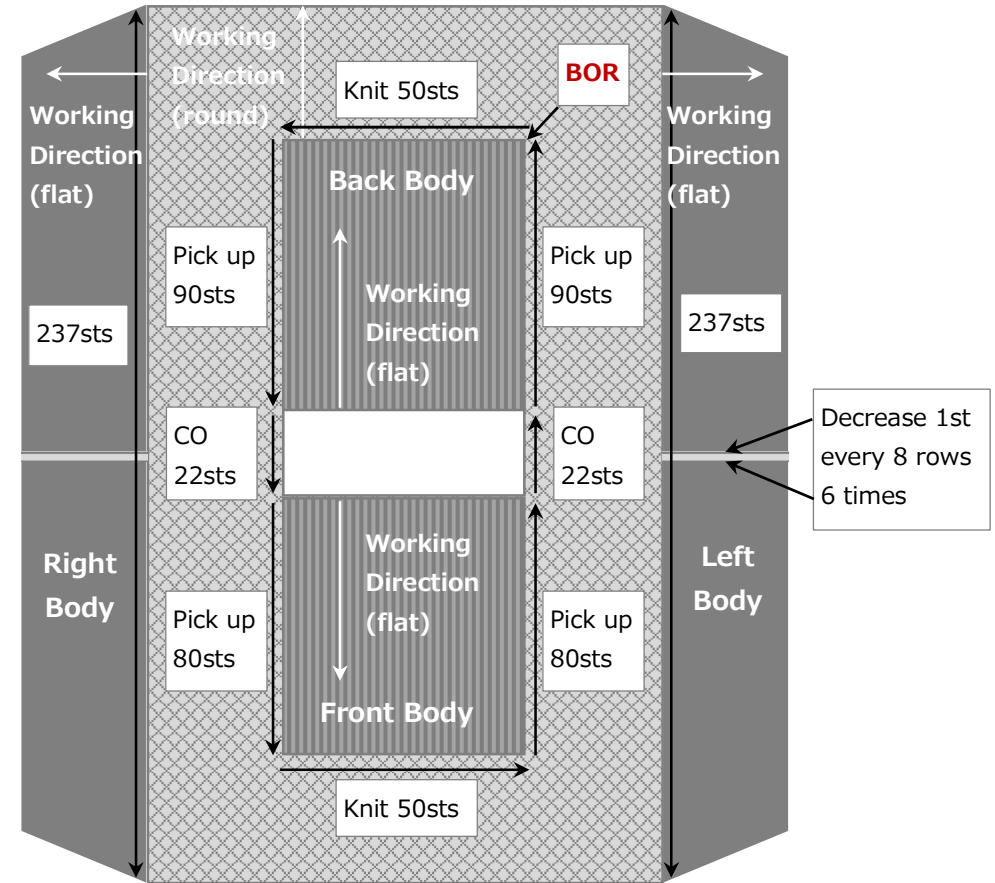
					16
-	-	-	-	-	15
-	∇	-	∇	-	14
-	Φ	-	Φ	-	13
-	∇	-	∇	-	12
-	Φ	-	Φ	-	11
-	∇	-	∇	-	10
-	Φ	-	Φ	-	9
-	∇	-	∇	-	8
-	Φ	-	Φ	-	7
-	∇	-	∇	-	6
-	Φ	-	Φ	-	5
-	∇	-	∇	-	4
-	Φ	-	Φ	-	3
-	∇	-	∇	-	2
-	Φ	-	Φ	-	1
5	4	3	2	1	

- Φ (RS) K1 tbl (WS) P1 tbl
- (RS) P1 (WS) K1
- (RS) K1 (WS) P1
- ∇ (RS) Sl1 wyib (WS) Sl1 wyif

Chart E

				4
∇		∇		3
				2
	∇		∇	1
4	3	2	1	

- (RS) K1 (WS) P1
- ∇ (RS) Sl1 wyif (WS) Sl1 wyib



Sec.1: Front Body

Use **3.0mm/JP3** circular needle and Start with **MC**

Work Front Body **flat**

R1(RS): **CO50** using scrap yarn and **Crocheted Provisional Cast On method**, Turn
R2(WS): K to End, Turn
R3(RS): K to End, Turn
R4(WS): K2, [Sl1 wyif, K2] to End, Turn
R5(RS): P2, [K1 tbl, P2] to End, Turn
R6-119: [R4-5] 57 times
R120(WS): R4

Break Yarn and Place 50sts for Front Body on a holder

Sec.2: Back Body

Use **3.0mm/JP3** circular needle and Start with **MC**

Work Back Body **flat**

R1(RS): **CO50** using scrap yarn and **Crocheted Provisional Cast On method**, Turn
R2(WS): K to End, Turn
R3(RS): K to End, Turn
R4(WS): K2, [Sl1 wyif, K2] to End, Turn
R5(RS): P2, [K1 tbl, P2] to End, Turn
R6-133: [R4-5] 64 times
R134(WS): R4

Don't Break Yarn and Continue to **Sec.3**

Sec.3: Body (Color Work)

Change to 3.3mm/JP4 circular needle and Work Body in the round (See page 4)

SetUp1(MC): [K2, K1tbl] to 2sts bef End, K2, Pick up (2sts per 3rows) and knit 90sts from the right side of Back Body, CO22 using **Provisional Crochet cast on method**, Pick up (2sts per 3rows) and knit 80sts from the right side of Front Body, Place 50sts for Front Body on a needle, [K2, K1tbl] to 2sts bef End, K2, Pick up (2sts per 3rows) and knit 80sts from the left side of Front Body, CO22 using **Provisional Crochet cast on method**, Pick up (2sts per 3rows) and knit 90sts from the left side of Back Body, PMM for BOR, Join to work in the round

>484sts in total

SetUp2(MC): SMM, P13, PM, P24, PM, P12, PM, P13, PM, P168, PM, P12, PM, P13, PM, P24, PM, P12, PM, P13, PM, P168, PM, P12

Join CC and Start Chart (See page 3)

R1-42: SMM, Chart A, SM, Chart B, SM, Chart C, SM, Chart A, SM, [Chart B] 7 times, SM, Chart C, SM, Chart A, SM, Chart B, SM, Chart C, SM, Chart A, SM, [Chart B] 7 times, SM, Chart C

>184sts inc, 668sts in total

Break only CC and Continue to Sec.4

Sec.4: Left Body

Work Left Body flat

SetUp(WS): RMM, Turn, K2, P to M, RM, P81, PM, P2, P2to, P2, PM, P to M, RM, P to 3st bef M, K2, Place the next 96sts for Front Body on a holder with all markers removed, Place the next 238sts for Right Body on a holder with all markers removed, Place the next 96sts for Back Body on a holder with all markers removed, Turn

>237sts in total, 116sts each between End and M

Start Chart (See page 4) and Start Decreases (every 8 rows)

R1(RS): P2, K to 2sts bef M, K2to, SM, Chart D, SM, SSK, K to 2sts bef End, P2, Turn

>Start with R1 of Chart D, 2sts dec, 235sts in total, 115sts each between End and M

R2(WS): K2, [P1, Sl1 wyib] to 1st bef M, Sl1 wyif, SM, Chart D, SM, Sl1 wyif, [Sl1 wyib, P1] to 2sts bef End, K2, Turn

R3(RS): P2, K to M, SM, Chart D, SM, K to 2sts bef End, P2, Turn

R4(WS): K2, [Sl1 wyib, P1] to 1st bef M, Sl1 wyif, SM, Chart D, SM, Sl1 wyif, [P1, Sl1 wyib] to 2sts bef End, K2, Turn

R5(RS): R3

R6-8: R2-4

R9(RS): R1

>2sts dec, 233sts in total, 114sts each between End and M

R10(WS): K2, [P1, Sl1 wyib] to 2sts bef M, P1, Sl1 wyif, SM, Chart D, SM, Sl1 wyif, [P1, Sl1 wyib] to 3sts bef End, P1, K2, Turn

R11(RS): R3

R12(WS): K2, [Sl1 wyib, P1] to 2sts bef M, Sl1 wyib, Sl1 wyif, SM, Chart D, SM, Sl1 wyif, [Sl1 wyib, P1] to 3sts bef End, Sl1 wyib, K2, Turn

R13(RS): R3

R14-16: R10-12

R17-48: [R1-16] 2 times

>End with R16 of Chart D, 8sts dec, 225sts in total, 110sts each between End and M

Don't Break Yarn and Continue to Sec.5

Sec.5: Left Side Join

Join Front and Back at the left side of the body using i-cord Join method

Place Front side sts on LN needle with RS facing, CO3 using Knitted cast on method

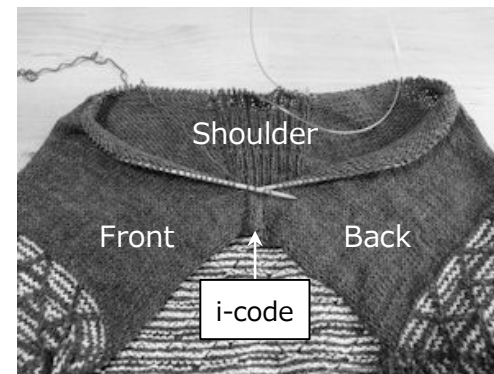
Place Back side sts on RN needle with RS facing

[Slip 1 stitch from RN onto LN, K2to, K1, SSK, Slip 3 stitches from RN onto LN] 63 times

Slip 1 stitch from RN onto LN, K2to, K1, SSK, Slip 1 stitch from RN onto LN

>3sts of i-cord and 97sts of the body remain, 100 sts in total

Don't Break Yarn and Continue to Sec.6



Sec.6: Sleeve

Work **Sleeve in the round**

R1: PMM for BOR, Join to work in the round, SSK, K to 2sts bef M, K2to, SM, Chart D, SM, SSK, K to 3sts bef MM, K2to, P1
>Start with R1 of Chart D, 4sts dec, 96sts in total

R2: SMM, [K1, Sl1 wyif] to 1st bef M, Sl1 wyib, SM, Chart D, SM, Sl1 wyib, [Sl1 wyif, K1] to 1st bef MM, P1

R3: K to M, SM, Chart D, SM, K to 1st bef MM, P1

R4: SMM, [Sl1 wyif, K1] to 1s bef M, Sl1 wyib, SM, Chart D, SM, Sl1 wyib, [K1, Sl1 wyif] to 2sts bef MM, K1, P1

R5: R3

R6-8 R2-4

R9-16: [R5-8] 2 times
>End with R16 of Chart D

Start **Decreases (every 16 rows)**

R17: SMM, K to 2sts bef M, K2to, SM, Chart D, SM, SSK, K to 1st bef MM, P1
>Start with R1 of Chart D, 2sts dec, 94sts in total

R18: SMM, [K1, Sl1 wyif] to 2sts bef M, K1, Sl1 wyib, SM, Chart D, SM, Sl1 wyib, [K1, Sl1 wyif] to 2sts bef MM, K1, P1

R19: R3

R20: SMM, [Sl1 wyif, K1] to 2sts bef M, Sl1 wyif, Sl1 wyib, SM, Chart D, SM, Sl1 wyib, [Sl1 wyif, K1] to 2sts bef to MM, Sl1 wyif, P1

R21: R3

R22-24: R18-20

R25-32: [R21-24] 2 times

R33: R17
>Start with R1 of Chart D, 2sts dec, 92sts in total

R34-48: R2-16

R49-112: [R17-48] 2 times
>End with R16 of Chart D, 8sts dec, 84sts in total

R113-126: R17-30
>End with R14 of Chart D, 2sts dec, 82sts in total

Sec.7: Cuff

Change to **3.0mm/JP3** circular needle and **Work Cuff in the round**

- R1: SMM, P to M, RM, P to M, RM, P to MM
R2: SMM, K3, K2to, [K2, K2to] to 5sts bef MM, K3, K2to
>20sts dec, 62sts in total
R3-27: SMM, [K1 tbl, P1] to MM
R28: BO all stitches knitwise

Sec.8: Ritht Body

Use **3.3mm/JP4** circular needle and **Start with MC**
Work Right Body flat

SetUp(WS): Place 238sts for Right Body on a needle with **WS facing**, Join yarn, K2, P114, PM, P2, P2to, P2, PM, P to 2sts bef End, K2, Turn
>237sts in total, 116sts each between End and M

Work the same as R1 to R48 of Sec.4
Don't Break Yarn and Continue to Sec.9

Sec.9: Right Side Join

Join Front and Back at the right side of the body using i-cord Join method

Place Back side sts on LN needle with RS facing, CO3 using Knitted cast on method
Place Front side sts on RN needle with RS facing
[Slip 1 stitch from RN onto LN, K2to, K1, SSK, Slip 3 stitches from RN onto LN] 63 times
Slip 1 stitch from RN onto LN, K2to, K1, SSK, Slip 1 stitch from RN onto LN
>3sts of i-cord and 97sts of the body remain, 100sts in total

Don't Break Yarn and Continue to Sec.6

Sec.10: Neck

Use **3.0mm/JP3** circular needle and Start with **MC**

Work Neck **in the round**

Remove Crocheted Provisional Cast On stitches of Back Body and Place 50sts on the needle with WS facing,
Remove Crocheted Provisional Cast On stitches of Right Shoulder and Place 22sts on the needle with WS facing,
Remove Crocheted Provisional Cast On stitches of Front Body and Place 50sts on the needle with WS facing,
Remove Crocheted Provisional Cast On stitches of Left Shoulder and Place 22sts on the needle with WS facing,
With RS facing PM for BOR, Join yarn, Join to work in the round
>BOR is at the left of Back Body, 144sts in total

R1: S11, K20, SSK, K48, K2to, K20, SSK, K48, K2to with the marker removed, PM

>4sts dec, 140sts in total

R2: P to M

R3: K to M

R4: BO all stitches purlwise

Sec.11: Hem

Use **3.0mm/JP3** circular needle and Start with **MC**

Work Hem **in the round**

Join yarn, Pick up and knit 2sts from Left i-code seam, Pick up (2sts per 3rows) and knit 34sts from Left Back Body,
Place 96sts for Back Body on a needle and K47, K2to, K47, Pick up (2sts per 3rows) and knit 34sts from Rghit Back Body,
PM, Pick up and knit 2sts from Right i-code seam, Pick up (2sts per 3rows) and knit 34sts from Rghit Back Body,
Place 96sts for Front Body on a needle and K47, K2to, K47, Pick up (2sts per 3rows) and knit 34sts from Left Front Body,
PMM for BOR, Join to work in the round
>BOR is at the left side, 330sts in total

R1-30: K2, [P1, K1 tbl] to 1st bef M, P1, SM, K2, [P1, K1 tbl] to 1st bef MM, P1

R31: BO all stitches knitwise