



Nuki -貫- features a pattern inspired by nuki joinery, a traditional Japanese architectural technique. It is worked seamlessly from the top down. Begin working flat, then join under the armholes and continue in the round.

YARN

Urth Monokrom DK [100g / 274m / 100% Merino Wool]
col.6063 1240m / 450g

NEEDLES

3.6mm / JP5 circular needle
3.3mm / JP4 circular needle
3.0mm / JP3 circular needle

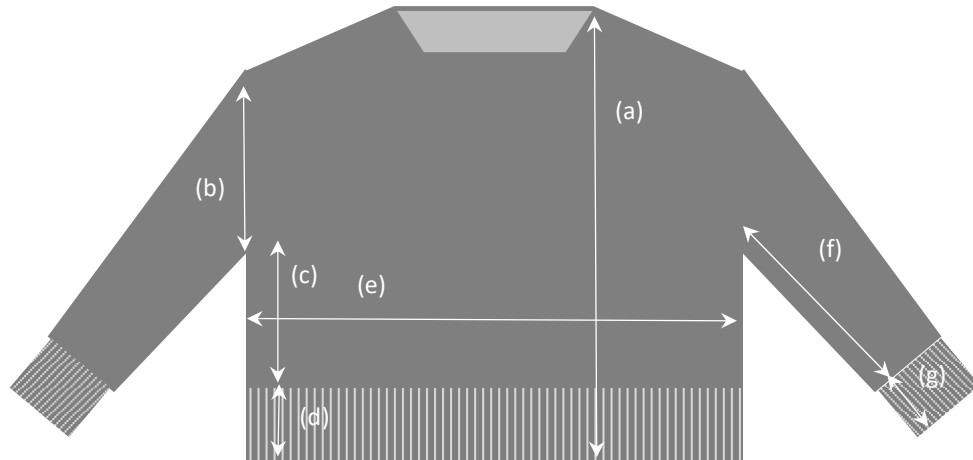
GAUGE

24 sts and 30 rows = 10cm
In St st with 3.6mm/JP5 needle
16 sts and 32 rows = 7cm and 10cm
In Main Pattern (See page6) with 3.6mm/JP5 needle

NOTIONS

Stitch markers
Holders
Cable Needle
Crochet hook (for Crocheted Provisional Cast-On)
Scrap yarn (for Crocheted Provisional Cast-On)

MEASUREMENTS



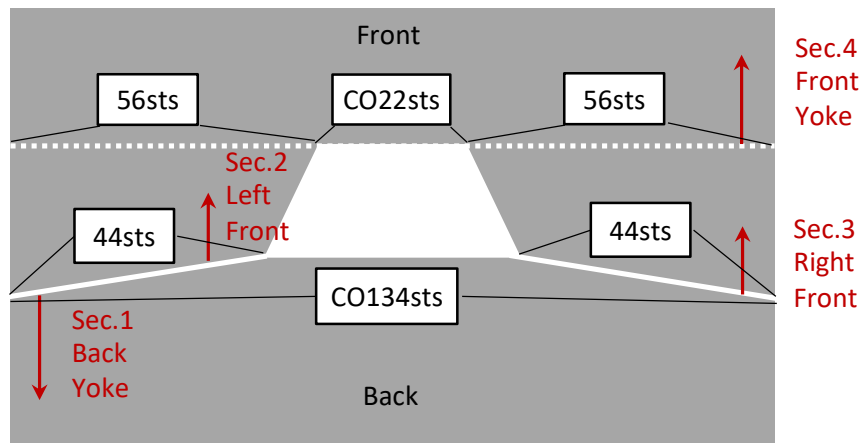
a: 50cm c: 21cm e: 54cm g: 7cm

b: 19cm d: 10cm f: 37cm

All measurements are taken flat

Finished body circumference approximately 108cm

INSTRUCTION FOR YOKE



ABBREVIATIONS

R: Row/Round

RS: Right Side

WS: Wrong Side

CO: Cast on

BO: Bind off

BOR: Beginning Of Round

st(s): stitch(es)

[]: repeat []

bef: before

M(a/b): Marker (a/b)

PM(a/b): Place Marker (a/b)

SM: Slip Marker

K: Knit

P: Purl

tbl: through back loop

K2to: Knit 2 stitches together

SSK: Slip, Slip, Knit 2 sts together through back loop

M1R: Make 1 stitch knit Right leaning stitch

M1PR: Make 1 stitch Purl Right leaning stitch

M1L: Make 1 stitch knit Left leaning stitch

M1PL: Make 1 stitch Purl Left leaning stitch

MDS: Make Double Stitch

KDS: Knit Double Stitch

PDS: Purl Double Stitch

1/1 RT: Sl1 to cable needle hold in back, K1,
K1 from cable needle

1/1 LT: Sl1 to cable needle hold in front, K1,
K1 from cable needle

Sec.1: Back Yoke

Use **3.6mm/JP5** circular needle and **Work Back Yoke flat**

Setup1(RS): CO134 using Crocheted Provisional Cast-On
Setup2(WS): K1, P1 tbl, K1, P40, PMa, P48, PMb, P40, K1, P1 tbl, K1

Start German Short Rows

R1-14: Work R1-14 of Back Shoulders Chart flat (See page 7)
> Work short rows, beginning R1 (RS) at Ma and R2 (WS) at Mb, maintaining Main Pattern
> Remove the markers after the first short row on each side
> Work short rows every 7 sts, 6 times on each side
> At the end, 8 repeats of Main Pattern will have been worked across the stitches

End German Short Rows

R15-32: Work R15-32 of Back Shoulders Chart flat (See page 7)
> 1 repeat of Main Pattern has been worked over the rows
R33-64: Work R1-32 of Nuki Chart flat (See page 6)
> 2 repeats of Main Pattern have been worked over the rows in total

Break yarn and Place 134 sts for Back Yoke on a holder

Sec.2: Left Front

Remove the Crocheted Provisional Cast-On from Sec.1
Place the 134 sts on a holder

Use **3.6mm/JP5** circular needle

Setup: With RS facing, place the leftmost 44 sts on the needle

The remaining 90 sts on the holder consist of 46 Neck sts and 44 Right Front sts

Join Yarn and Work Left Front flat

R1-24: Work R1-24 of Left Front Chart flat (See page 8)
> 12 sts increased, 56 sts total

Break yarn and Place 56 sts for Left Front on a holder

Sec.3: Right Front

Use **3.6mm/JP5** circular needle

Setup: With RS facing, place the rightmost 44 sts held from Sec.2 on the needle

Join Yarn and Work Right Front flat

R1-24: Work R1-24 of Right Front Chart flat (See page 9)
> 12 sts increased, 56 sts total

Don't break yarn and Continue to Sec.4

Sec.4: Front Yoke

Join Left Front and Right Front

Work Front Yoke flat

R1: Work Front Yoke Chart sts 1–43, CO22 using Loop Cast-On,
Place 56 Left Front sts on the left-hand needle and
work Front Yoke Chart sts 66–92 (See page 10)

> 134 sts total

R2-18: Work R2-18 of Front Yoke Chart flat (See page 10)

> 1 repeat of Main Pattern has been worked over the rows

R19-50: Work R1-32 of Nuki Chart flat (See page 6)

> 1 more repeat of Main Pattern have been worked over the rows,
2 repeats in total

Don't break yarn and Continue to Sec.5

Sec.5: Body

Join Front Yoke and Back Yoke

Work Body in the round

R1: Work R1 of Nuki Chart, CO5 using Loop Cast-On,
Place 134 Back Yoke sts on the left-hand needle and
work R1 of Nuki Chart, CO5 using Loop Cast-On,
PM for BOR, Join to work in the round (See page 6)

> 278 sts total

R2-64: SM, [Work the next row of Nuki Chart, K2 tbl, P1, K2 tbl] 2 times

> 2 more repeats of Main Pattern have been worked over the rows,
4 repeats in total

Sec.6: Hem

Change to 3.3mm/JP4 circular needle

R1-28: SM, P1, K1 tbl, [P1, K2 tbl] 43 times, P1, K1 tbl,
[P1, K2 tbl] 2 times, P1, K1 tbl, [P1, K2 tbl] 43 times,
P1, K1 tbl, [P1, K2 tbl] 2 times

Change to 3.0mm/JP3 circular needle

R29: SM, K to M

R30: SM, P to M

BO all stitches knitwise

Sec.7: Sleeves

Use 3.6mm/JP5 circular needle

Join yarn and Work Sleeve in the round

Setup: Pick up and knit 92 sts
beginning at the center of the underarm,
PM for BOR, Join to work in the round

> Pick up 5 sts from the underarm CO

> Pick up 87 sts from Front Yoke and Back Yoke
(approximately pick up 2sts per 3rows)

> 92 sts total

R1-9: SM, P1, K2 tbl, P1, K to 3 sts bef M, P1, K2 tbl

R10: SM, P1, K2 tbl, P1, SSK, K to 5 sts bef M, K2tbl, P1, K2 tbl
> 2 sts decreased, 90 sts total

R11-100: [R1-10] 9 times

> Decrease 2 sts every 10 rows

> 18 sts decreased, 72 sts total

R101-109: SM, P1, K2 tbl, P1, K to 3 sts bef M, P1, K2 tbl

R110: SM, P1, K2 tbl, P1, SSK, [K10, SSK] 2 times, K13,
[K2to, K10] 2 times, K2to, P1, K2 tbl

> 6 sts decreased, 66 sts total

Sec.8: Cuffs

Change to 3.3mm/JP4 circular needle

R1: SM, P1, K2 tbl, P1, P to 3 sts bef M, P1, K2 tbl

R2: SM, P1, K2 tbl, P1, K to 3 sts bef M, P1, K2 tbl

R3-20: SM, [P1, K2 tbl] to M

Change to 3.0mm/JP3 circular needle

R21: SM, K to M

R22: SM, P to M

BO all stitches knitwise

Sec.9: Neck

Use 3.3mm/JP4 circular needle

Setup: Place 46 Neck sts held from Sec.2 on the right-hand needle,
Join Yarn, Pick up and knit 74 sts from the front neck,
PM for BOR, Join to work in the round

> Pick up 26 sts from Left Front edge

> Pick up 22 sts from Front Yoke CO

> Pick up 26 sts from Right Front edge

> 120 sts total

Work Neck in the round

R1: SM, K to M

R2: SM, P to M

R3: SM, K to M

R4-9: SM, [P1, K2 tbl] to M

R10: SM, K to M

R11: SM, P to M

BO all stitches knitwise

Chart

Legend

- (RS) K
- (WS) P
- (RS) P
- (WS) K
- (RS) M1R
- (WS) M1PR
- (RS) M1L
- (WS) M1PL
- (RS) MDS
- (WS) MDS
- (RS) KDS
- (WS) PDS

T Turn

CO using Loop Cast-On

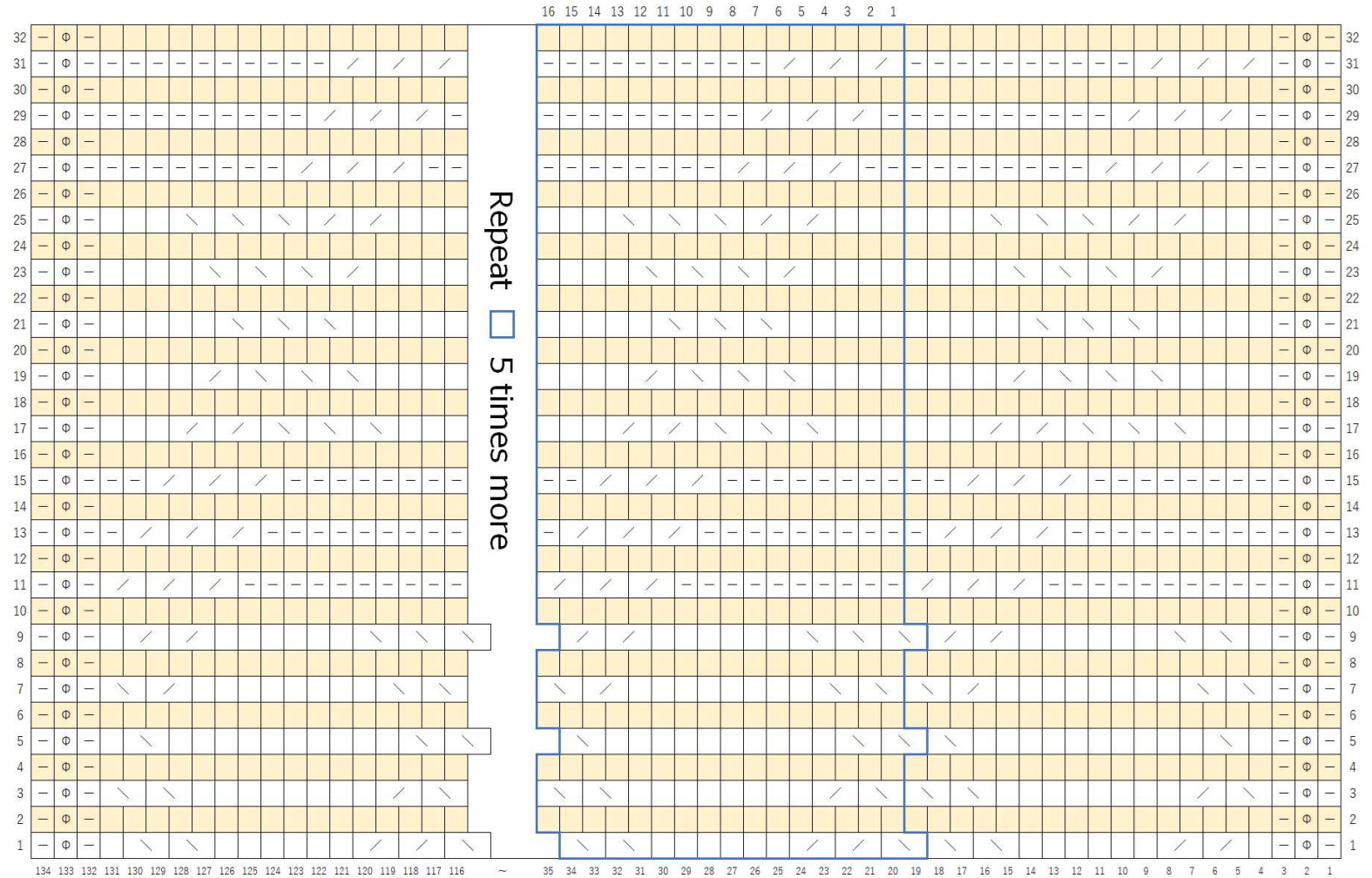
1/1 RT

1/1 LT

Main Pattern

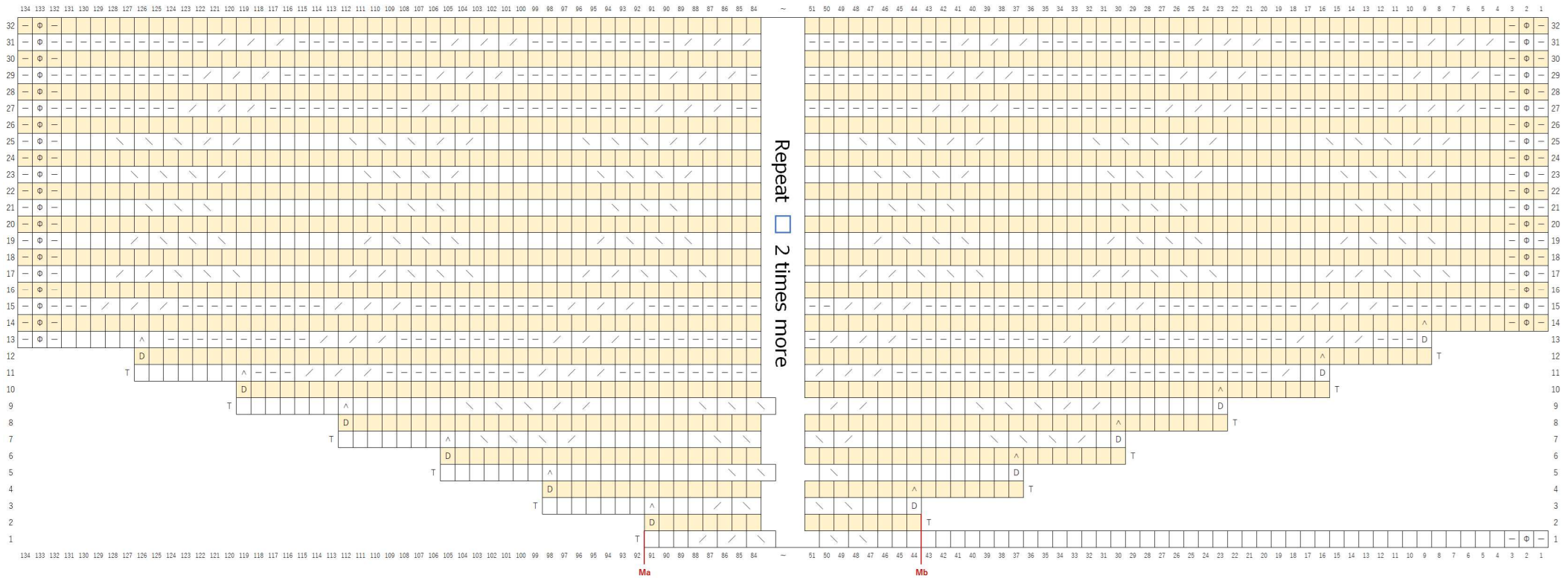
16 sts and 32 rows in Nuki Chart

Nuki



When working in the round, work all rows on the right side

Back Shoulders



16 sts and 32 rows in Nuki Chart (See page 6)

